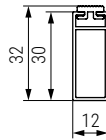



OPTIMA Tubo rectangular de aluminio 30x12mm.



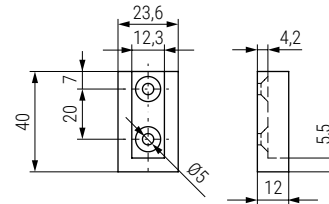
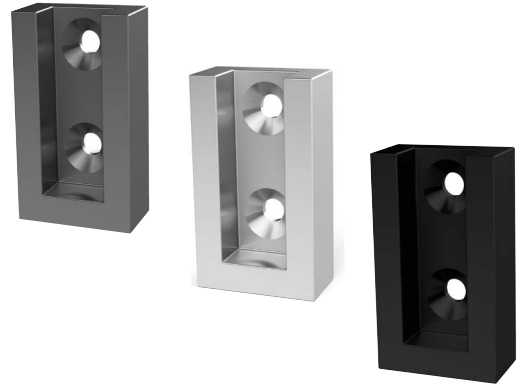
ACTUALIZADO EL DÍA 16/02/2026


• Con perfil de plástico en la parte superior para un perfecto deslizamiento de las perchas.

| CÓDIGO     |          |            | Largo | Material |  |
|------------|----------|------------|-------|----------|---|
| Plata mate | Grafito  | Negro mate | 3m.   | aluminio | 20 barras   |
| 9037.91    | 9037.292 | 9037.301   |       |          |   |

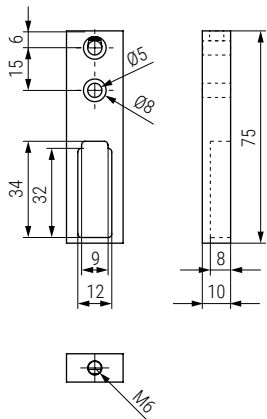
Soporte lateral para tubo rectangular OPTIMA

Optima  
by ALK®



| CÓDIGO     |          |            | Material |  |
|------------|----------|------------|----------|---|
| Plata mate | Grafito  | Negro mate | zamak    | 480   |
| 9037.211   | 9037.212 | 185.14     |          |   |

Soporte para tubo rectangular lateral OPTIMA  
Sujeción lateral y/o superior



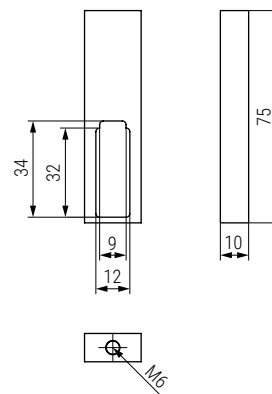
ACTUALIZADO EL DÍA 18/02/2026

• Tornillo métrico incluido M6 X 30.

• Con taladro lateral y superior.

| CÓDIGO     |          |          | Material |  |
|------------|----------|----------|----------|---|
| Plata mate | Grafito  | Negro    | zamak    | 36/360  |
| 9037.93    | 9037.294 | 9037.303 |          |   |


Soporte para tubo rectangular OPTIMA  
Sujeción superior



ACTUALIZADO EL DÍA 18/02/2026

• Tornillo métrico incluido M6 X 30.

• Solo taladro superior.

| CÓDIGO     |          |          | Posición | Material |  |
|------------|----------|----------|----------|----------|---|
| Plata mate | Grafito  | Negro    | central  | zamak    | 36/360  |
| 9037.95    | 9037.296 | 9037.302 |          |          |   |
| 9037.98    | 9037.297 | -        |          |          |   |