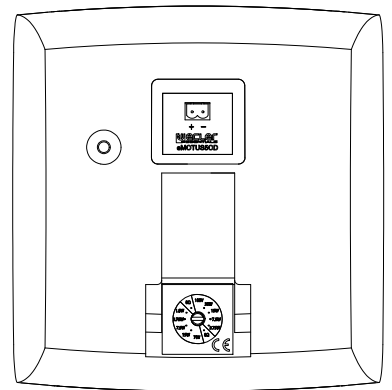
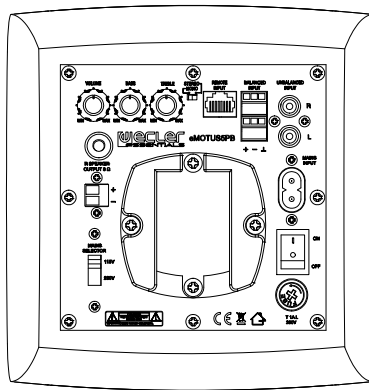
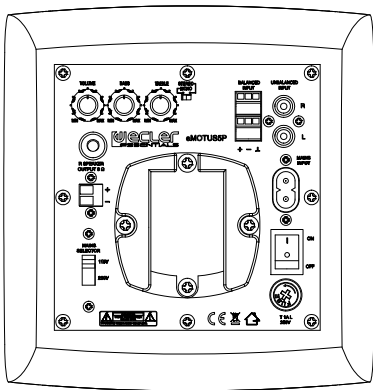
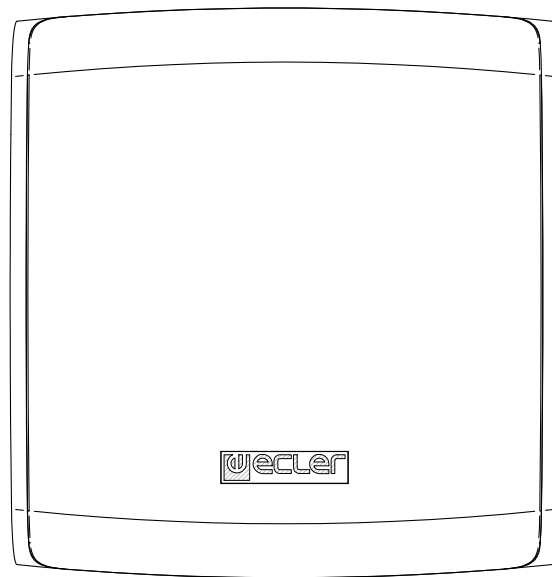


# eMOTUS5P eMOTUS5PB eMOTUS5OD SERVICE MANUAL



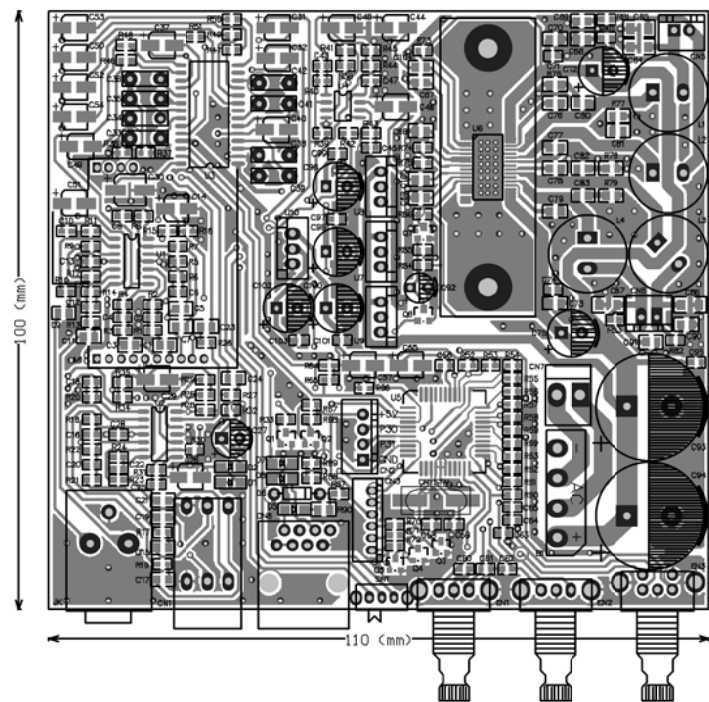
 **wecler**

SERVICE MANUAL eMOTUS5P - eMOTUS5PB -  
eMOTUS5OD

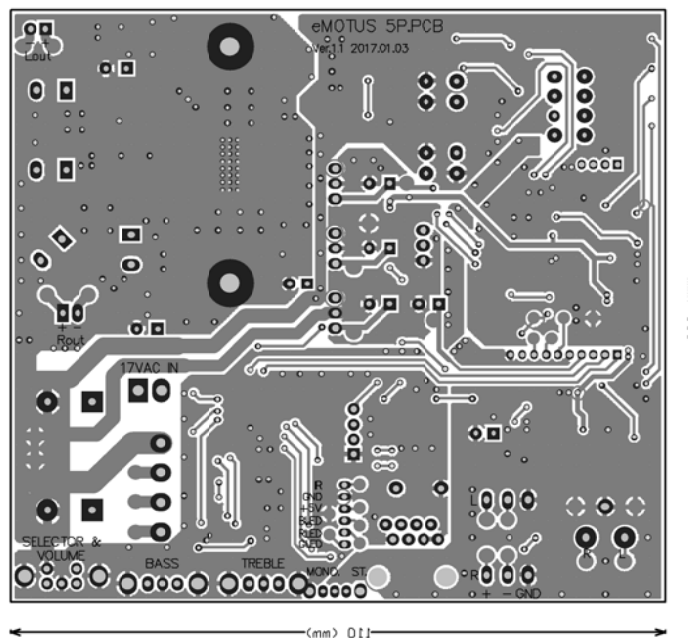
INDEX

- SCHEMATICS
- COMPONENTS LOCATION SCHEMA
- MUSIC VERIFICATION
- TECHNICAL CHARACTERISTICS
- MECHANICAL DIAGRAM
- PACKING DIAGRAM





顶层



底层镜像

| 版次   | 日期       | 描述及说明              | 签名 | 公差表 (±)       |      |      | 未注公差<br>选公差表<br>等级 | 设计 | 名称:            | 物料编码                                 |    |    |
|--|----------|--------------------|----|---------------|------|------|--------------------|----|----------------|--------------------------------------|----|----|
|  |          |                    |    | 尺寸范围          | A级   | B级   |                    |    |                | 1. 01. C14. EMOTUS5P-A               |    |    |
| 1  | 17.05.17 | Ver.1.1 2017.01.03 |    | 0 < X ≤ 5     | 0.05 | 0.10 | A级                 | 审核 | eMOTUS 5P. PCB | 表面处理                                 | 重量 | 比例 |
| 2  | 17.06.12 | Ver.1.1 2017.01.03 |    | 5 < X ≤ 30    | 0.10 | 0.20 |                    |    |                |                                      |    |    |
|  |          |                    |    | 30 < X ≤ 120  | 0.15 | 0.30 |                    |    |                |                                      |    |    |
|  |          |                    |    | 120 < X ≤ 400 | 0.20 | 0.40 |                    |    |                |                                      |    |    |
|  |          |                    |    | 400 < X       | 0.30 | 0.50 |                    |    |                |                                      |    |    |
| 备注:  |          |                    |    |               |      |      | 单位: mm             | 批准 | 材质:            | 第 张 共 张                              |    |    |
| 1. 请使用工艺圆角, 未注工艺圆角: <R0.1mm;<br>2. 未特别注明尺寸均表示小端数值;<br>3. 所有尺寸均为表面处理后的尺寸; |          |                    |    |               |      |      |                    |    |                | 1. 6mm厚FR-4双面板 双面镀锡<br>绿阻焊 铜箔厚度70 μm |    |    |

## BURNING TEST

Leave the unit connected to Mains 230VAC supply (without input signal) for at least 12 hours and alternating switch ON and OFF cycles.

## SAFETY VERIFICATION TESTS

### **Preliminary:**

Unplug the unit to be tested from the mains outlet.

Short all ground terminals from signal inputs, outputs and other external connectors, except the mains plug's ground.

Turn ON the unit's main power switch.

### **Ground continuity test:**

Connect the tester probes between the mains ground contact and the unit's backside main ground test point. When applying a 10A current, verify that the ground impedance is lower than  $0.1\Omega$ .

### **Electrical insulation test:**

Connect the electrical insulation tester probes between the mains outlet ground contact and both shorted mains input poles.

Adjust the tester's current limit down to 10mA.

Apply 1500Vac during 5 seconds.

The unit's insulation should be able to resist this voltage, without generating spurious sparks or a sparkover effect, and the tester may not detect any malfunction.

*CAUTION: Do not disconnect nor touch the test probes until the test has finished completely!*

## CHECKING WITH MUSIC PROCEDURE

### REQUIRED MATERIAL

- CD Player.
- One AUDEO106 passive cabinet or similar.
- Audio input and output cables.
- Mains 230V cable.
- WPmVOL in case of EMOTUS5PB.
- Ethernet CABLE in case of EMOTUS5PB.

### PRELIMINARY

- Connect the MAINS 230V into the eMOTUS5PB or eMOTUS5OD socket.
- Connect the Passive Cabinet to the R SPEAKER OUTPUT.
- Connect the WPmVOL to the EMOTUS5PB through the ETHERNET cable.

### COMMON VERIFICATION (EMOTUS5P and EMOTUS5PB).

1. Turn ON the POWER SWITCH and verify the POWER LED turns ON. The POWER LED is located below the ECLER LOGO. The LED must light GREEN.
2. Turn the VOLUME cursor DOWN. Press PLAY on the CD PLAYER and connect its output to the EMOTUS DEVICE. Slowly turn UP the VOLUME cursor in order to start HEARING audio signal at the CABINETS (Master and Slave). The audio signal must be CLEAR and must lack of interferences or noises.
3. Press PAUSE or STOP at the CD PLAYER and verify the NOISE FLOOR at the OUTPUT is not too high or has 50Hz – 100Hz presence.
4. Press PLAY again and check the BASS and TREBLE controls on both OUTPUTS.
5. Verify the STEREO – MONO operation by turning right the STEREO/MONO switch.
6. Check the point 2 with the BALANCED INPUTS.
7. Finally, CHECK the MUTE operation by PRESSING the VOLUME TAP. This must MUTE all the OUTPUTS. Press AGAIN the VOLUME TAP to UNMUTE the OUTPUTS.

### ANNEX VERIFICATION (EMOTUS5PB).

1. Connect to the BLUETOOTH NETWORK called eMOTUS5. Password is "0000". Play some AUDIO FILES on the device connected and check the eMOTUS5PB plays these files at its outputs. To do this, press the BT BUTTON on INPUT SELECT of the REMOTE CONTROL.
2. Turn UP and DOWN the OUTPUT VOLUME by pressing "+" and "-" on the REMOTE CONTROL. Check the REMOTE CONTROL buttons are smooth and the RECEIVER turns UP and DOWN the volume.
3. Select UNBAL on the REMOTE CONTROL INPUT SELECT buttons and verify the BT input is disconnected, and only the UNBALANCED input sounds into the OUTPUTS.

## QUALITY CONTROL

Check out the unit's general presentation, focusing on these four points.

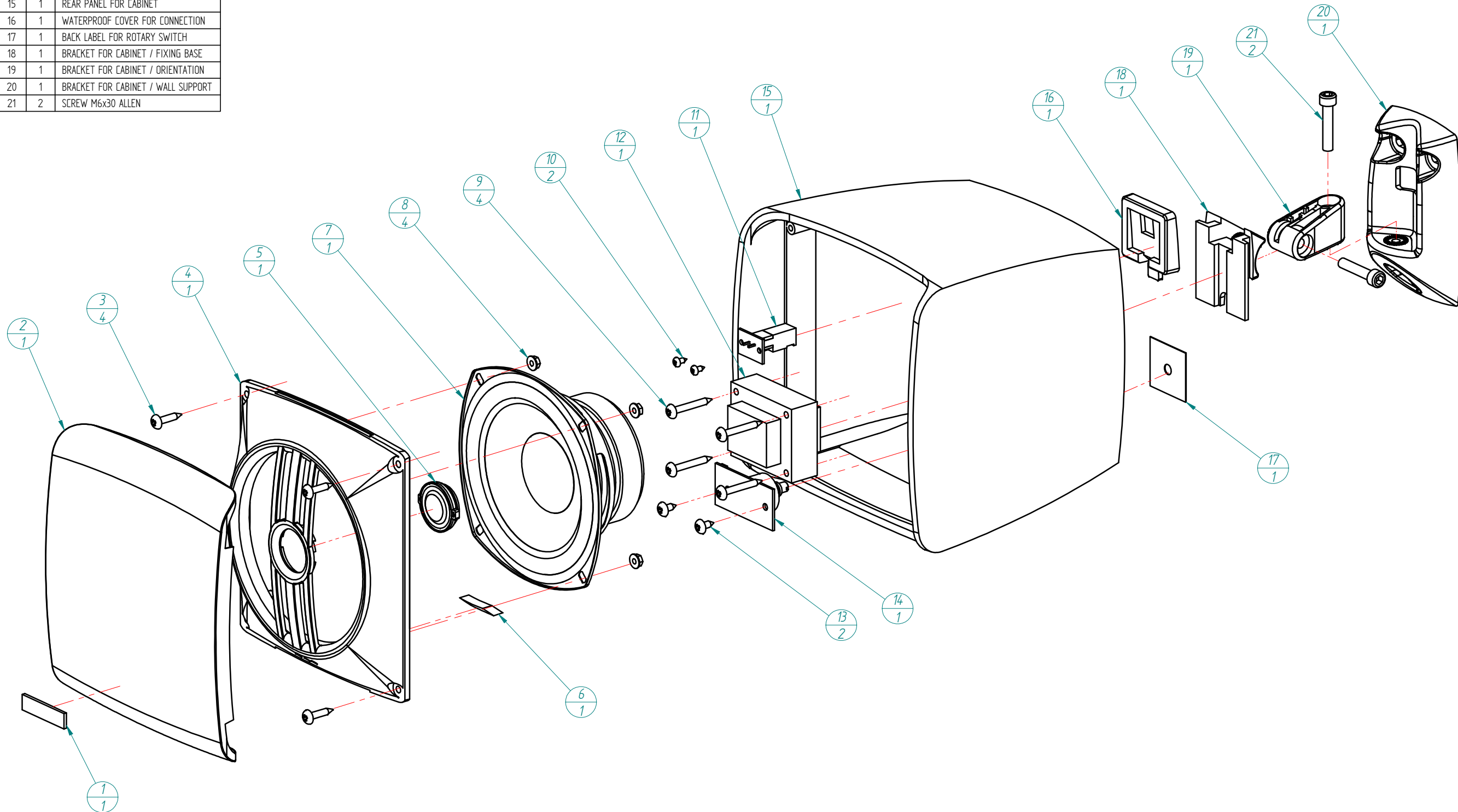
1. All mechanical parts should be visually revised, in order to detect scratches on the unit's painting and silk screen defects.
2. Verify that the potentiometers are well-centered and don't brush with the chassis.
3. All screws should be on their place, correctly tight and unmarked.

|  |  |
|--|--|
| Power  | 2 x 25WRMS   |
| Speaker size / impedance                         | 5" / 8Ω  |
| Frequency response (±10dB)                       | 85Hz – 20kHz   |
| THD+Noise @ 1kHz Full Pwr                        | ≤0.5%  |
| Inputs Sensitivity / Impedance                   | 525mV/22KΩ   |
| CMRR - LINE BAL                                  | ≥80dB  |
| Tone control response                            | ±14 dB   |
| Mains voltage                                    | 115 / 230VAC (selectable)  |
| Power consumption (pink noise, 1/8 power @ 8ohm) | ≤10.5W   |
| Power consumption (pink noise, 1/3 power @ 8ohm) | ≤23W   |
| Power consumption Standby                        | ≤3W  |
| Dimensions WxDxH                                 | 173x185x180mm (not including brackets)<br>173x248x180mm (including brackets) |
| Weight   | 4.2Kg (not including accessories)<br>4.5Kg (including accessories)           |

|  |  |
|--|--|
| Power  | 2 x 25WRMS   |
| Speaker size / impedance                         | 5" / 8Ω  |
| Frequency response (±10dB)                       | 85Hz – 20kHz   |
| THD+Noise @ 1kHz Full Pwr                        | ≤0.5%  |
| Inputs Sensitivity / Impedance                   | 525mV/22KΩ   |
| CMRR - LINE BAL                                  | ≥80dB  |
| Tone control response                            | ±14 dB   |
| Bluetooth  | 4.0 Compliant Class II Range up to 10 Meters                                 |
| Supported Bluetooth Profiles                     | A2DP v1.2, AVRCP v1.4, HFP v1.6, HSP v1.2                                    |
| Decoder support                                  | aptX, SBC, MP3 and AAC   |
| Mains voltage                                    | 115 / 230VAC (selectable)  |
| Power consumption (pink noise, 1/8 power @ 8ohm) | ≤10.5W   |
| Power consumption (pink noise, 1/3 power @ 8ohm) | ≤23W   |
| Power consumption Standby                        | ≤3W  |
| Dimensions WxDxH                                 | 173x185x180mm (not including brackets)<br>173x248x180mm (including brackets) |
| Weight   | 4.8kgs(not including accessory)<br>5.3 kgs(including accessory)              |
| Remote control characteristics                   | f=455 kHz, carrier=38kHz NEC format  |
| Battery  | Lithium Cell CR2025 3V   |

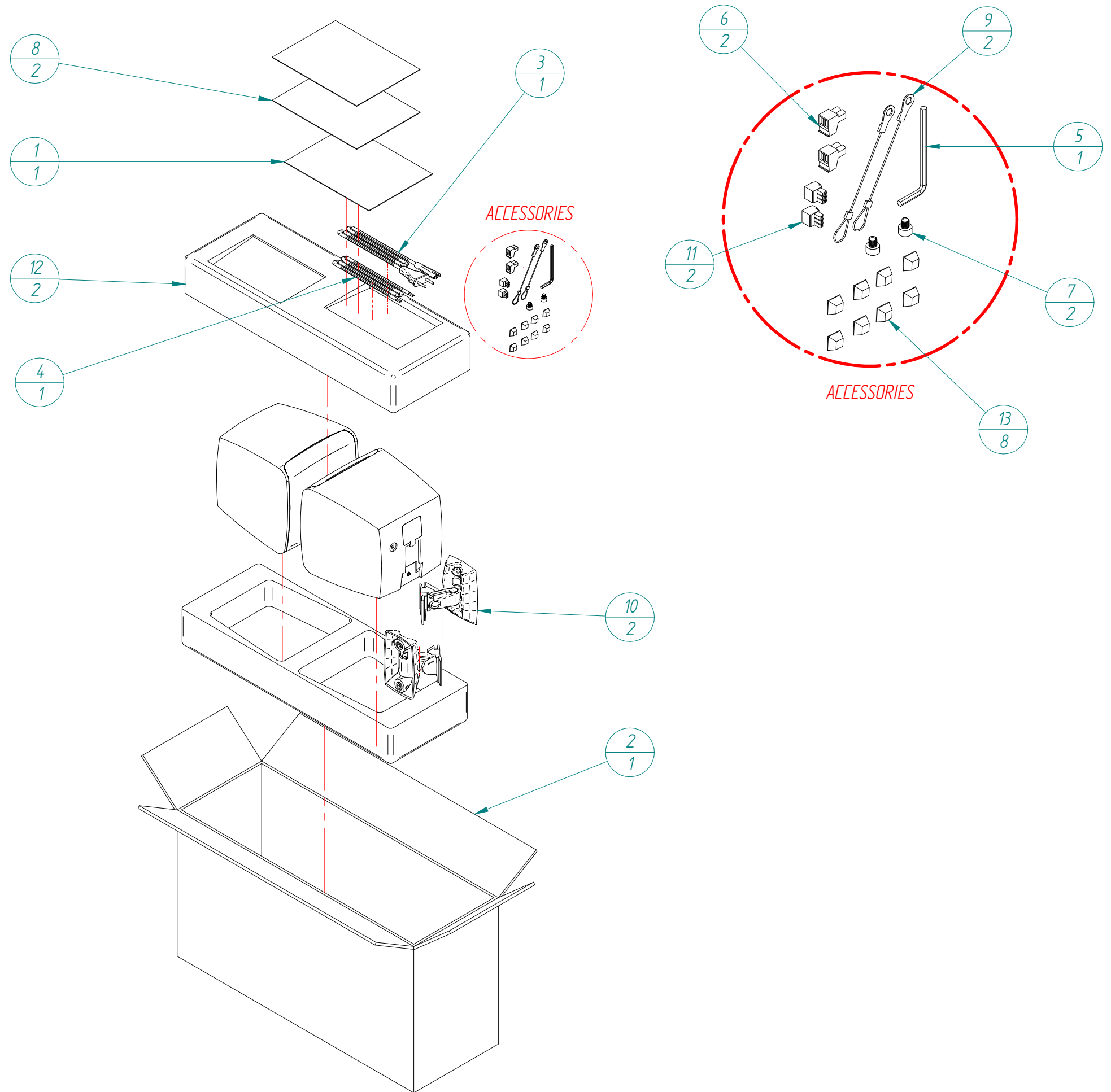
|                            |  |
|----------------------------|--|
| Speaker size               | 5"   |
| Impedance                  | 8Ω / 100V  |
| RMS Power                  | 40W  |
| Program power              | 80W  |
| 100V Tabs                  | 30W / 15W / 7.5W / 3.75W   |
| Frequency response (±10dB) | 85Hz – 20kHz   |
| Dimensions WxDxH           | 173x181x180mm (not including brackets)<br>173x248x180mm (including brackets) |
| Weight                     | 4.8Kg (not including accessories)<br>5.3Kg (including accessories)           |

| N° | Qty. | Description                        |
|----|------|------------------------------------|
| 1  | 1    | ECLER Essentials LOGO              |
| 2  | 1    | PROTECTION GRILLE                  |
| 3  | 4    | SCREW TA4X20mm                     |
| 4  | 1    | FRONT PANEL FOR CABINET            |
| 5  | 1    | HF UNIT (TWEETER)                  |
| 6  | 1    | FOAM SEALING PART                  |
| 7  | 1    | 5 INCHES BASS LOUDSPEAKER          |
| 8  | 4    | M4 FIXING NUT                      |
| 9  | 4    | SCREW TA3.5x35mm                   |
| 10 | 2    | SCREW TA3x10mm                     |
| 11 | 1    | EUROBLOCK 2C CONNECTION BASE       |
| 12 | 1    | HI Z TRANSFORMER                   |
| 13 | 2    | SCREW TA4x12mm                     |
| 14 | 1    | LO Z - HI Z TAPPING ROTARY SWITCH  |
| 15 | 1    | REAR PANEL FOR CABINET             |
| 16 | 1    | WATERPROOF COVER FOR CONNECTION    |
| 17 | 1    | BACK LABEL FOR ROTARY SWITCH       |
| 18 | 1    | BRACKET FOR CABINET / FIXING BASE  |
| 19 | 1    | BRACKET FOR CABINET / ORIENTATION  |
| 20 | 1    | BRACKET FOR CABINET / WALL SUPPORT |
| 21 | 2    | SCREW M6x30 ALLEN                  |



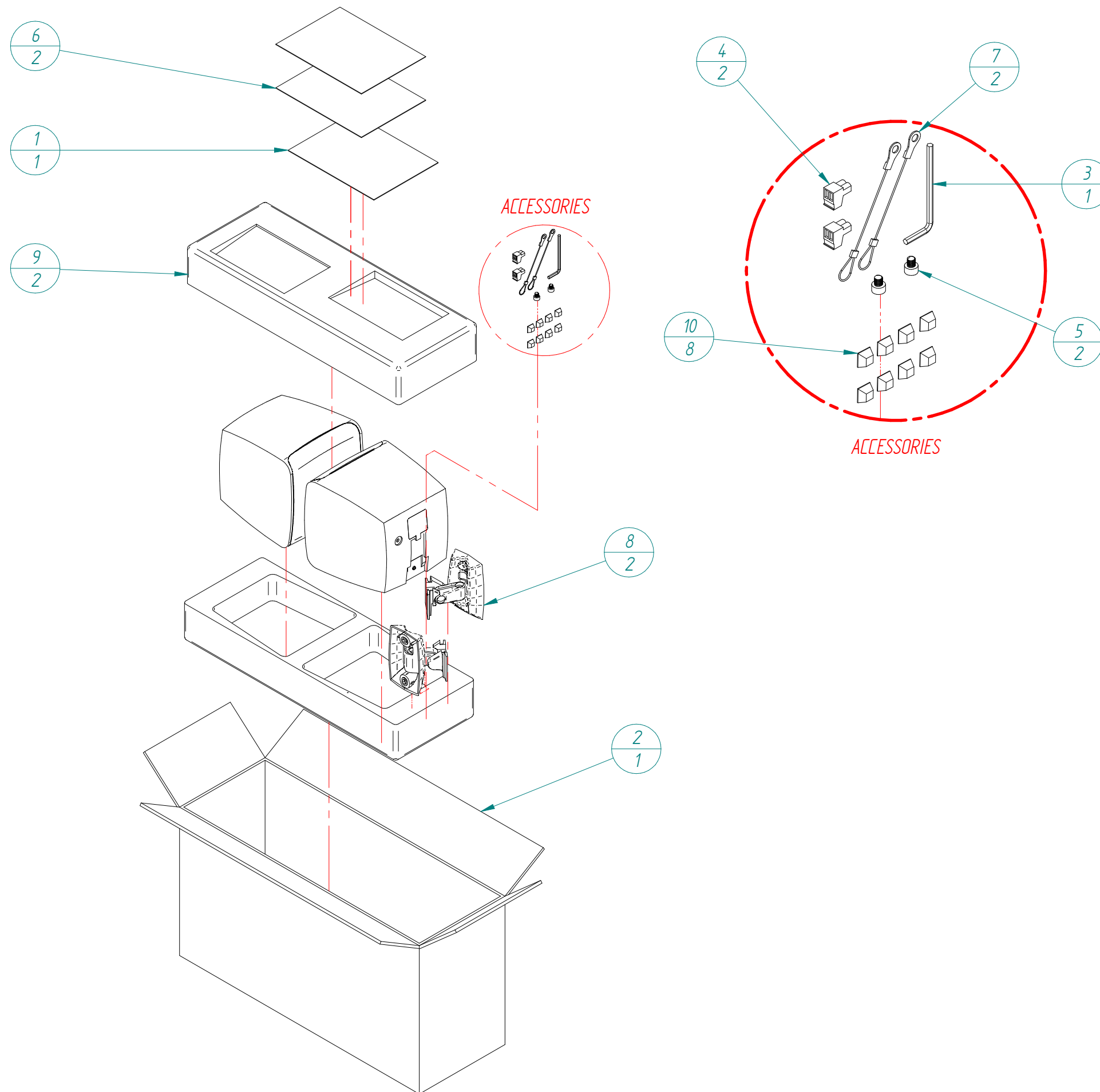
| N° | Qty. | Description                          |
|----|------|--------------------------------------|
| 1  | 1    | GENERIC USER MANUAL                  |
| 2  | 1    | PACKING CARDBOARD BOX                |
| 3  | 1    | AC POWER CORD                        |
| 4  | 1    | SLAVE CONNECTING CABLE 3m GREY/WHITE |
| 5  | 1    | ALLEN KEY 5mm                        |
| 6  | 2    | CONNECTING TERMINAL STRIPS 2C P=5.08 |
| 7  | 2    | SCREW M6 ALLEN                       |
| 8  | 2    | WARRANTY CARD                        |
| 9  | 2    | STEEL STRIP                          |
| 10 | 2    | WALL SUPPORT                         |
| 11 | 2    | CONNECTING TERMINAL STRIPS 3C        |
| 12 | 2    | TOP PACKING REINFORCEMENT            |
| 13 | 8    | RUBBER FOOT                          |

NOTE:  
INTRODUCE EVERY WALL SUPPORT, eMOTUS CABINETS  
AND ACCESORIES KIT IN A APPROPRIATE PLASTIC BAG



| N° | Qty. | Description                          |
|----|------|--------------------------------------|
| 1  | 1    | GENERIC USER MANUAL                  |
| 2  | 1    | PACKING CARDBOARD BOX                |
| 3  | 1    | ALLEN KEY 5mm                        |
| 4  | 2    | CONNECTING TERMINAL STRIPS 2C P=5.08 |
| 5  | 2    | SCREW M6 ALLEN                       |
| 6  | 2    | WARRANTY CARD                        |
| 7  | 2    | STEEL STRIP                          |
| 8  | 2    | WALL SUPPORT                         |
| 9  | 2    | TOP PACKING REINFORCEMENT            |
| 10 | 8    | RUBBER FOOT                          |

NOTE:  
INTRODUCE EVERY WALL SUPPORT, eMOTUS CABINETS  
AND ACCESORIES KIT IN A APPROPRIATE PLASTIC BAG



| N° | Qty | Description                          |
|----|-----|--------------------------------------|
| 1  | 1   | GENERIC USER MANUAL                  |
| 2  | 1   | PACKING CARDBOARD BOX                |
| 3  | 1   | AC POWER CORD                        |
| 4  | 1   | SLAVE CONNECTING CABLE 3m GREY/WHITE |
| 5  | 1   | ALLEN KEY 5mm                        |
| 6  | 1   | IR REMOTE CONTROL                    |
| 7  | 2   | CONNECTING TERMINAL STRIPS 2C P=5,08 |
| 8  | 2   | SCREW M6 ALLEN                       |
| 9  | 2   | WARRANTY CARD                        |
| 10 | 2   | STEEL STRIP                          |
| 11 | 2   | WALL SUPPORT                         |
| 12 | 2   | CONNECTING TERMINAL STRIPS 3C        |
| 13 | 2   | TOP PACKING REINFORCEMENT            |
| 14 | 8   | RUBBER FOOT                          |

NOTE:  
INTRODUCE EVERY WALL SUPPORT, eMOTUS CABINETS  
AND ACCESORIES KIT IN A APPROPRIATE PLASTIC BAG

