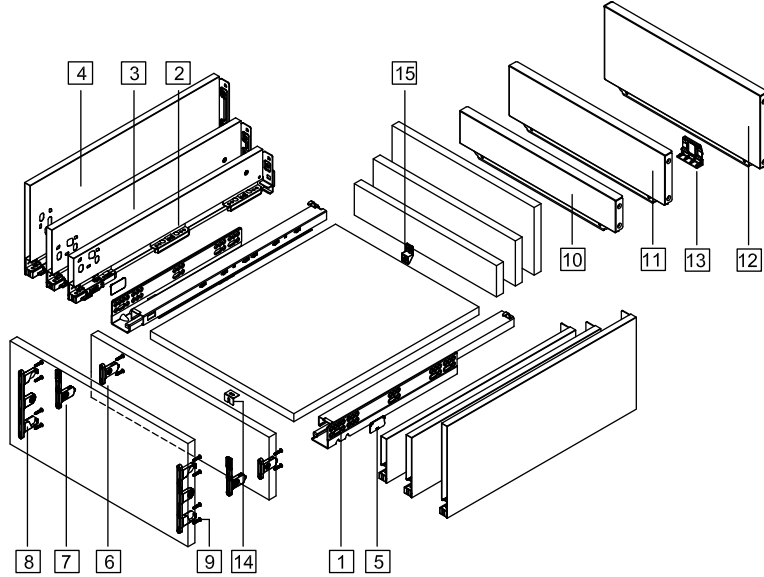


Montaje / Assembly / Montaggio / Montage/ Montagem

Componentes / Components / componenti / Composants / Componentes



1. Cabinet profiles: L/R	10. Metal back height 89	Item No.	Nominal length	Internal drawer length	Min. installation length of drawer
2.89 Drawer profiles: L/R	11. Metal back height 121	270	270mm	244mm	275mm
3.121 Drawer profiles: L/R	12. Metal back height 185	300	300mm	274mm	305mm
4.185 Drawer profiles: L/R	13. Metal back fixed	350	350mm	324mm	355mm
5. Side cover plate	14. Bottom fixing (for wide drawer)	400	400mm	374mm	405mm
6.89 Front fixing-brackets	15. Back fixing (for wide drawer)	450	450mm	424mm	455mm
7.121 Front fixing-brackets		500	500mm	474mm	505mm
8.185 Front fixing-brackets		550	550mm	524mm	555mm
9. Front fixing-brackets screw (Ø4x17)		600	600mm	574mm	605mm

Dimensiones del fondo y la parte trasera del cajón Drawer back and bottom dimensions

Back H=155mm

Metal Back Height L=LW-42

Drawer Bottom L=NL-20

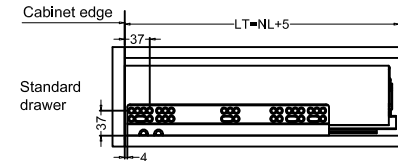
KB Cabinet width
LW Internal cabinet width
NL Nominal length

Type	89	121	185
H (mm)	59	91	155

KB ≥ 800mm
Metal back fixed

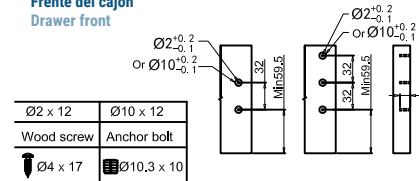
Dimensiones de instalación (mm) Installation dimensions (mm)

Nominal slide length=NL Internal cabinet depth=LT

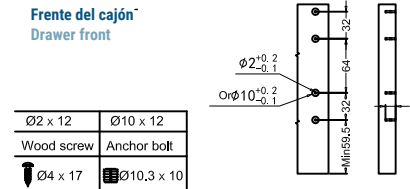


Dimensiones de instalación del cajón. (mm) Drawer installation dimensions. (mm)

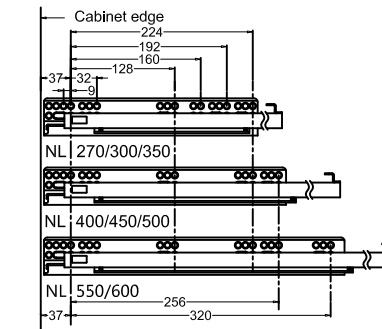
Frete del cajón Drawer front



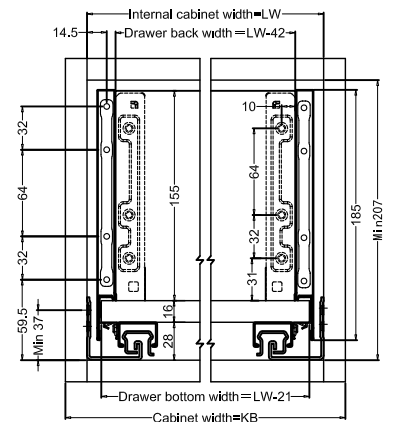
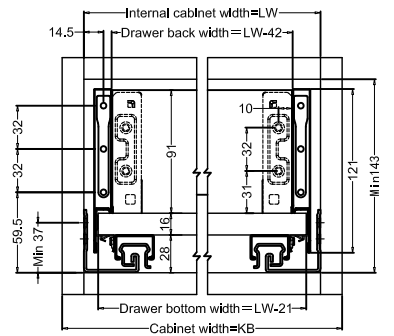
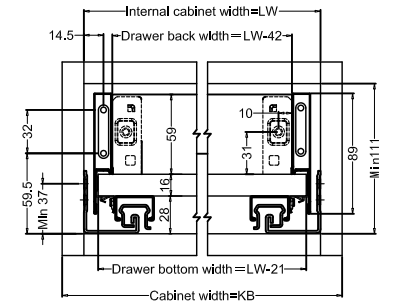
Frete del cajón Drawer front



Posiciones de los tornillos Screw positions of the sides.

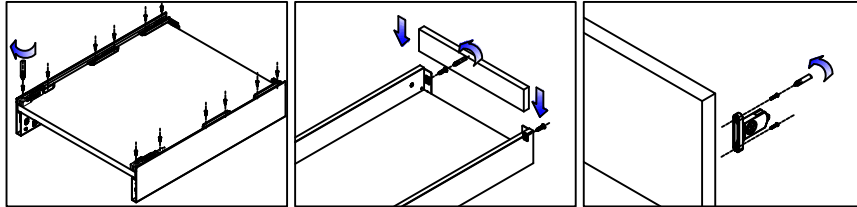


Dimensiones de instalación del cajón. (mm) Drawer installation dimensions. (mm)



Montaje / Assembly / Montaggio / Montage/ Montagem

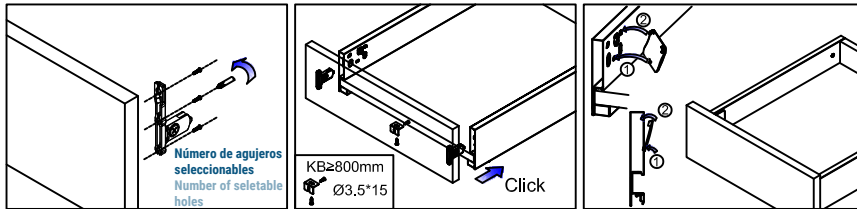
Desmontaje y ajuste del conjunto / Assembly removal and adjustment



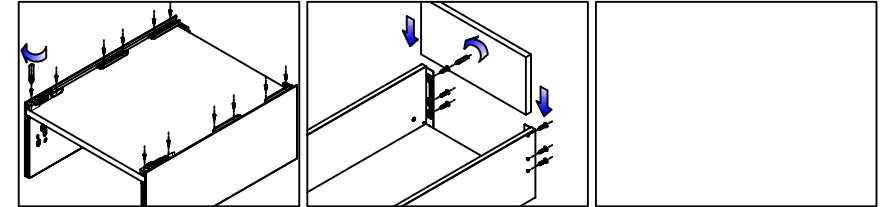
Ensamblaje inferior
Bottom assembly

Montaje trasero
Back assembly

Montaje frontal
Front assembly



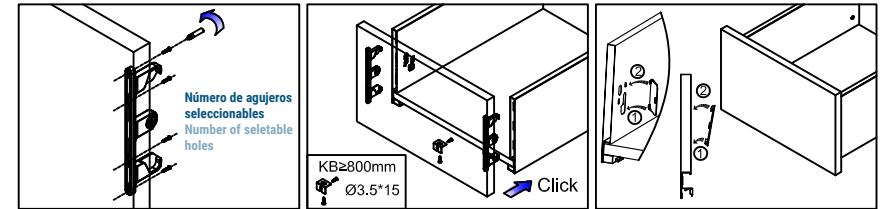
Montaje frontal
Front assembly



Ensamblaje inferior
Bottom assembly

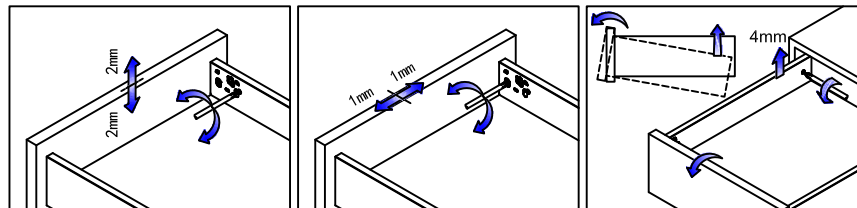
Montaje trasero
Back assembly

Montaje frontal
Front assembly



Montaje frontal
Front assembly

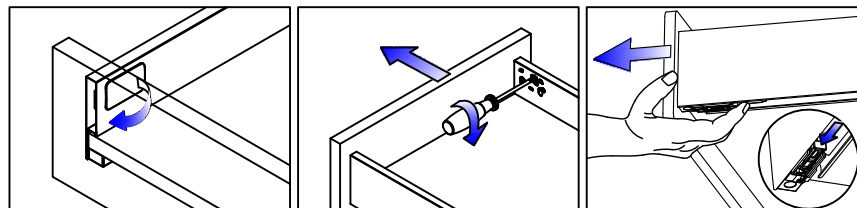
Ajustes / Adjustment



Ajuste hacia arriba y hacia abajo
Up & down adjustment

Ajuste derecha e izquierda
Left & right adjustment

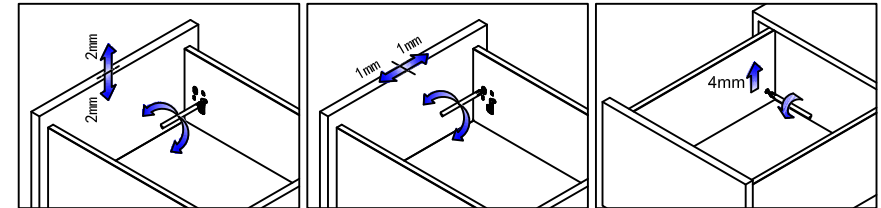
Ajuste del ángulo de pendiente frontal
Front slope angle adjustment



Inclina la tapa y tire hacia afuera.
Tip up the cover and pull out

Para desmontar el cajón
Removal drawer front

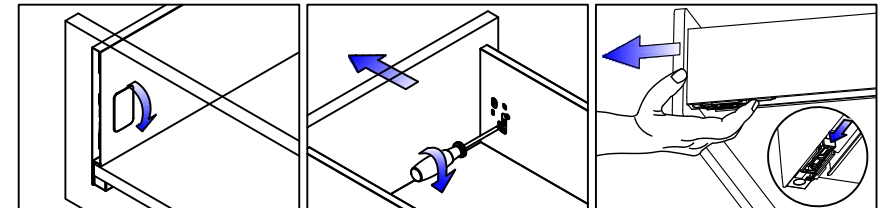
Desmontar cajón
Removal drawer



Ajuste hacia arriba y hacia abajo
Up & down adjustment

Ajuste derecha e izquierda
Left & right adjustment

Ajuste del ángulo de pendiente frontal
Front slope angle adjustment



Inclina la tapa y tire hacia afuera.
Tip up the cover and pull out

Para desmontar el cajón
Removal drawer front

Desmontar cajón
Removal drawer